

**TEAMING UP
4 FORESTS**

TEAMING UP 4 FORESTS WEBINAR



7 November - 14:00 CET

Europe's future
forest management
in a changing
climate

More at
teamingup4forests.com

TEAMING UP 4 FORESTS
is a platform initiated by



Agenda

- 1) **Welcome** and introduction
- 2) **Setting the scene:** Europe's wood supply in disruptive times
- 3) **Environmental factors** impacting Europe's wood supply
- 4) **Stakeholder perspectives** on future forest management
- 5) **Moderated panel discussion** with experts
- 6) **Q&A** with audience
- 7) **Outlook** and closing of session

Andrey Krasovskiy, Florian Kraxner (Scientific experts on climate change, IIASA, Austria)

Manfred Lexer (Scientific expert on forest management, BOKU, Austria)

Karoliina Niemi (Forest Director, Finnish Forest Industries Federation, Finland)

Jessica Nordin (Head of Sustainability, Södra, Sweden)

Welcome by **Michael Kleine** (IUFRO Deputy Executive Director, Austria)

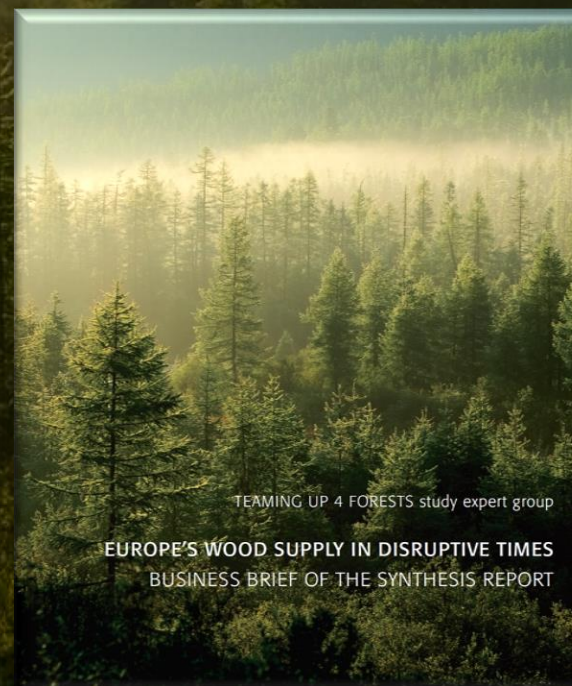
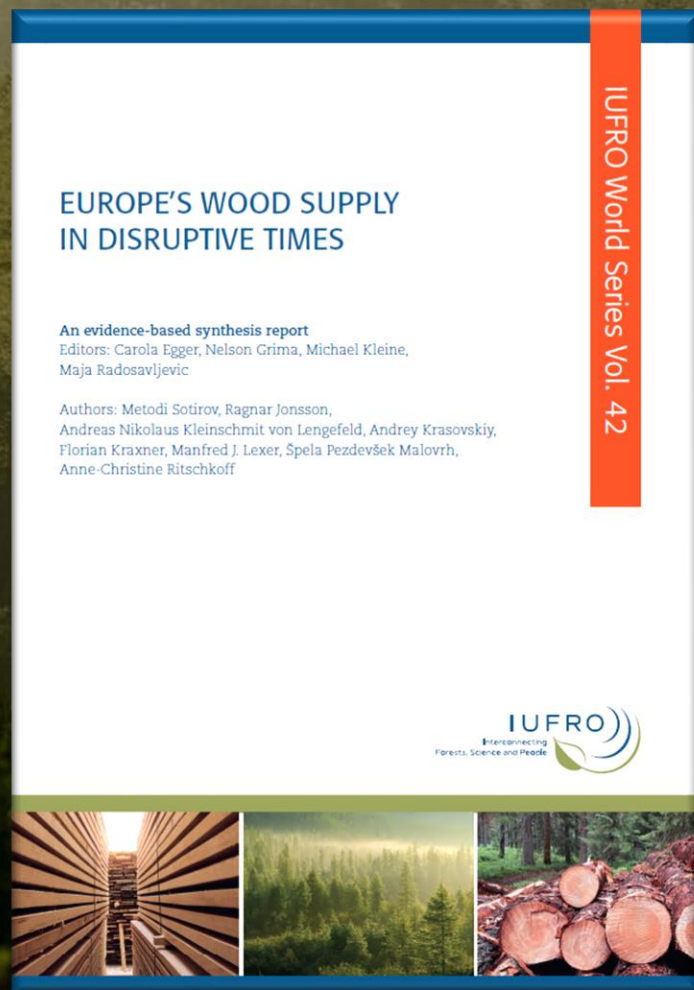
Speakers

Study on Europe's wood supply

**TEAMING UP
4 FORESTS**



Download full report,
summary and
factsheet here



Factors impacting Europe's wood supply



- ✓ Forest types and growth
- ✓ Climate change
- ✓ Forest management

ENVIRONMENTAL



- ✓ EU and national forest-related policies and laws
- ✓ National forest policy priorities
- ✓ Forest property rights

POLITICAL



- ✓ Forest ownership
- ✓ Demographic developments
- ✓ Market trends
- ✓ Geopolitics and international trade

SOCIOECONOMIC

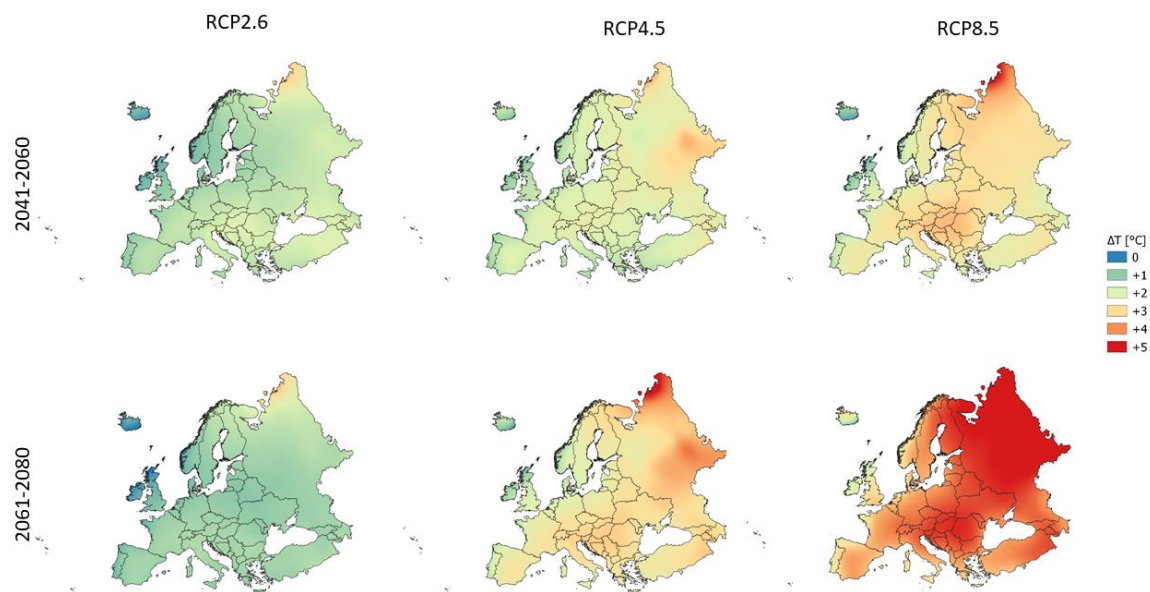


- ✓ Innovative wood-based technologies and their developments
- ✓ Emerging wood-based products and their market trends

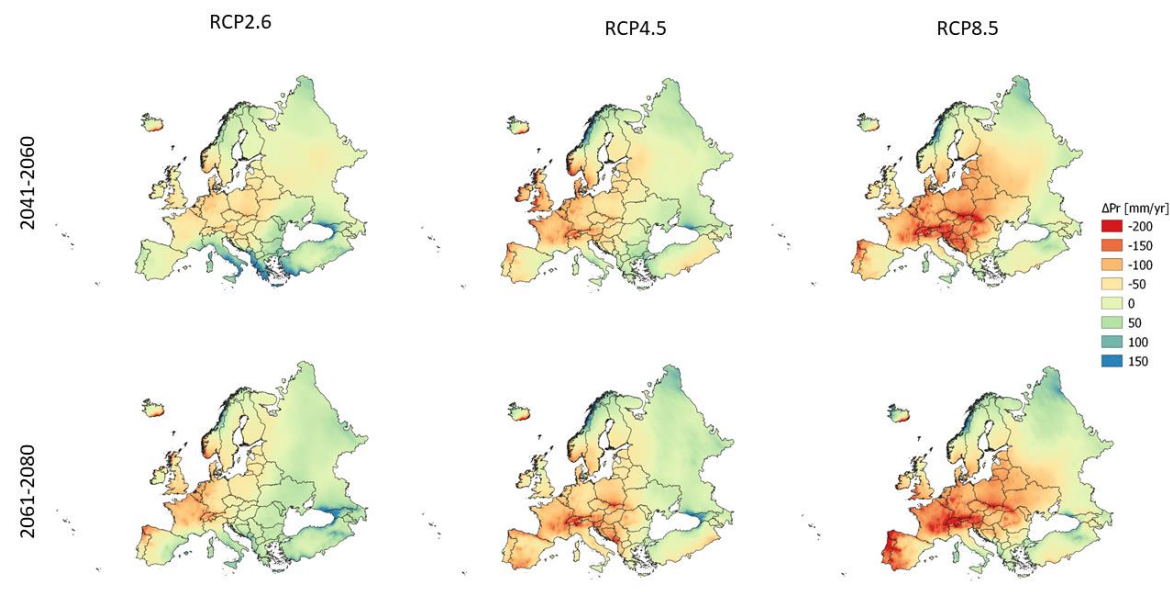
TECHNOLOGICAL

Climate change – future conditions in Europe

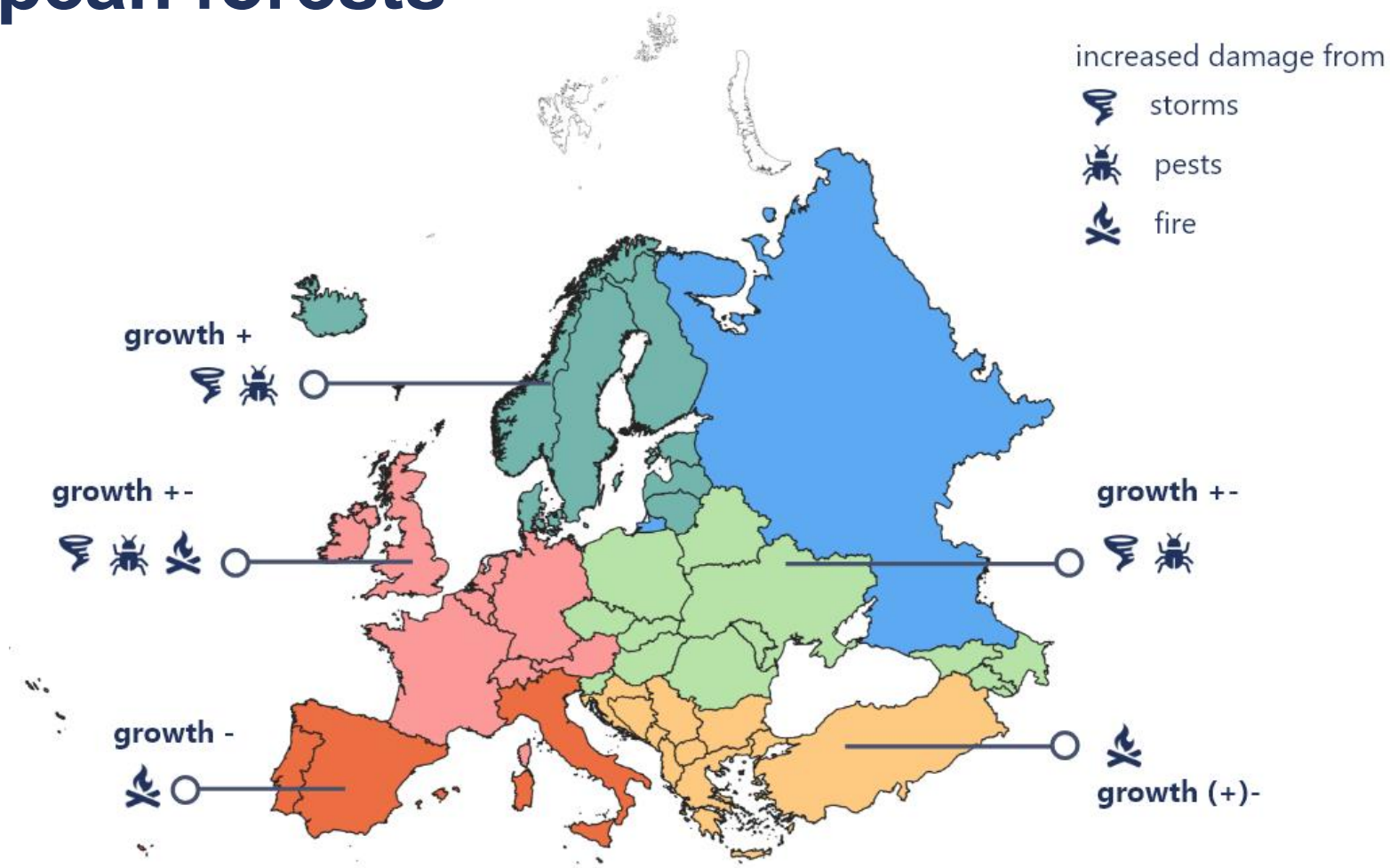
Temperature



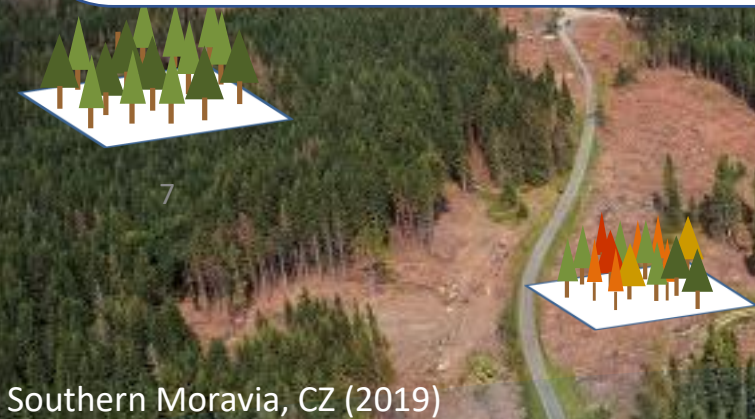
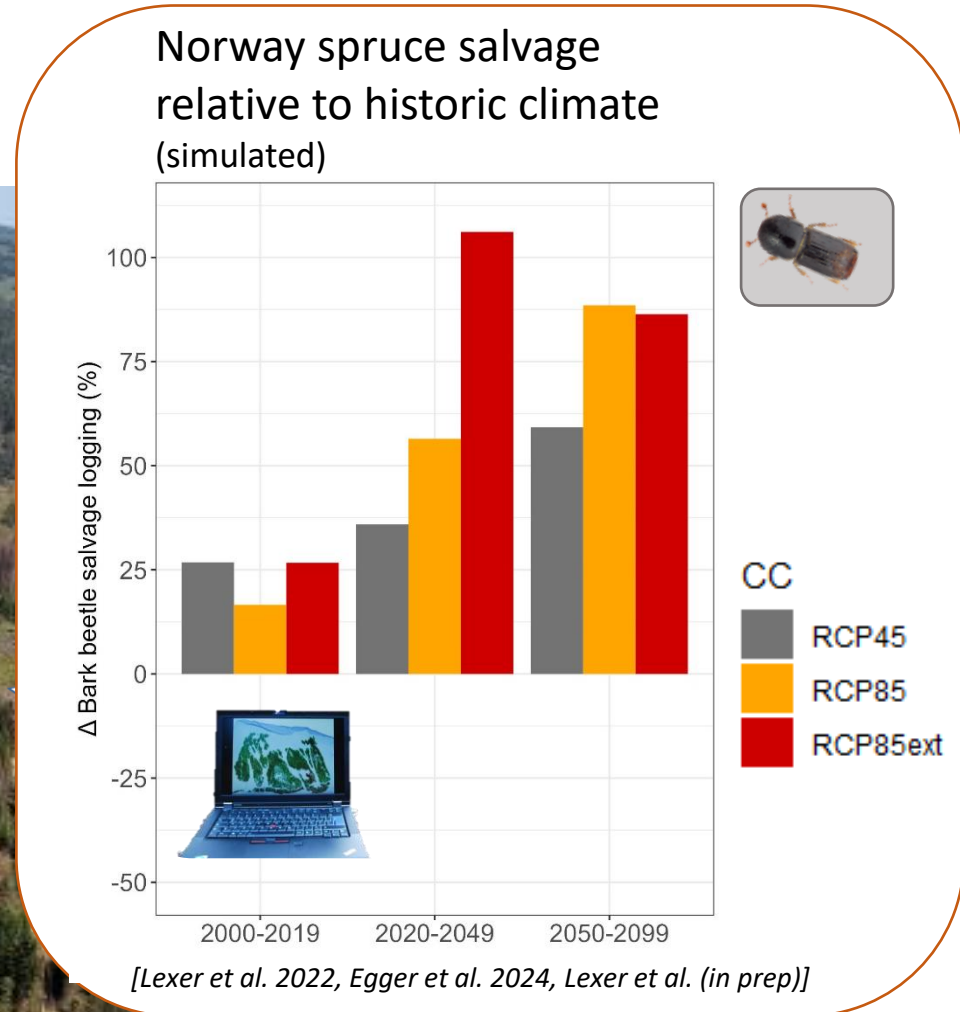
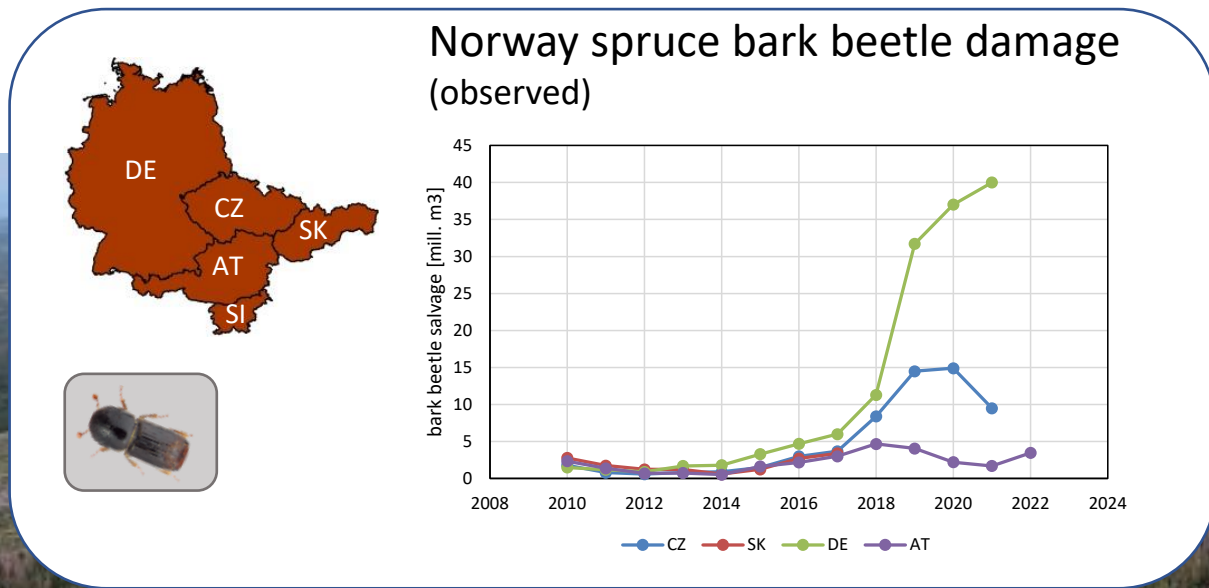
Precipitation



Climate change – impacts on European forests

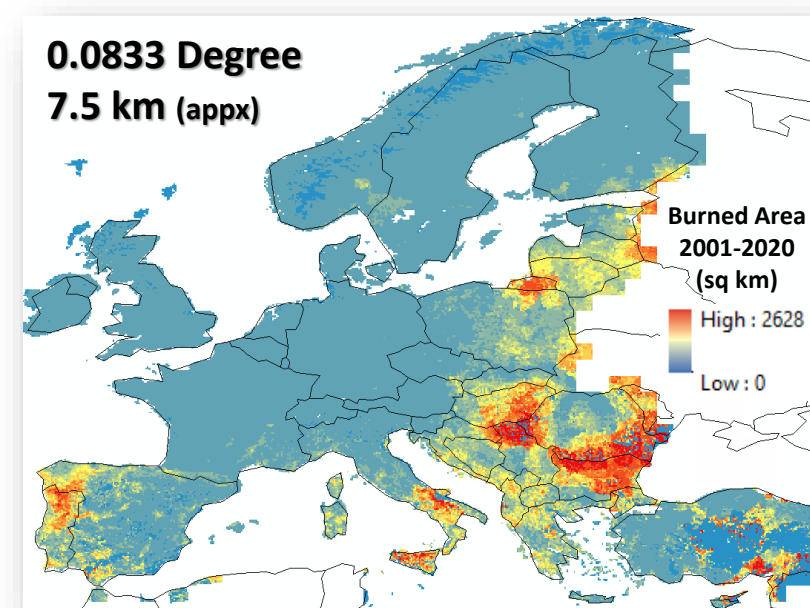
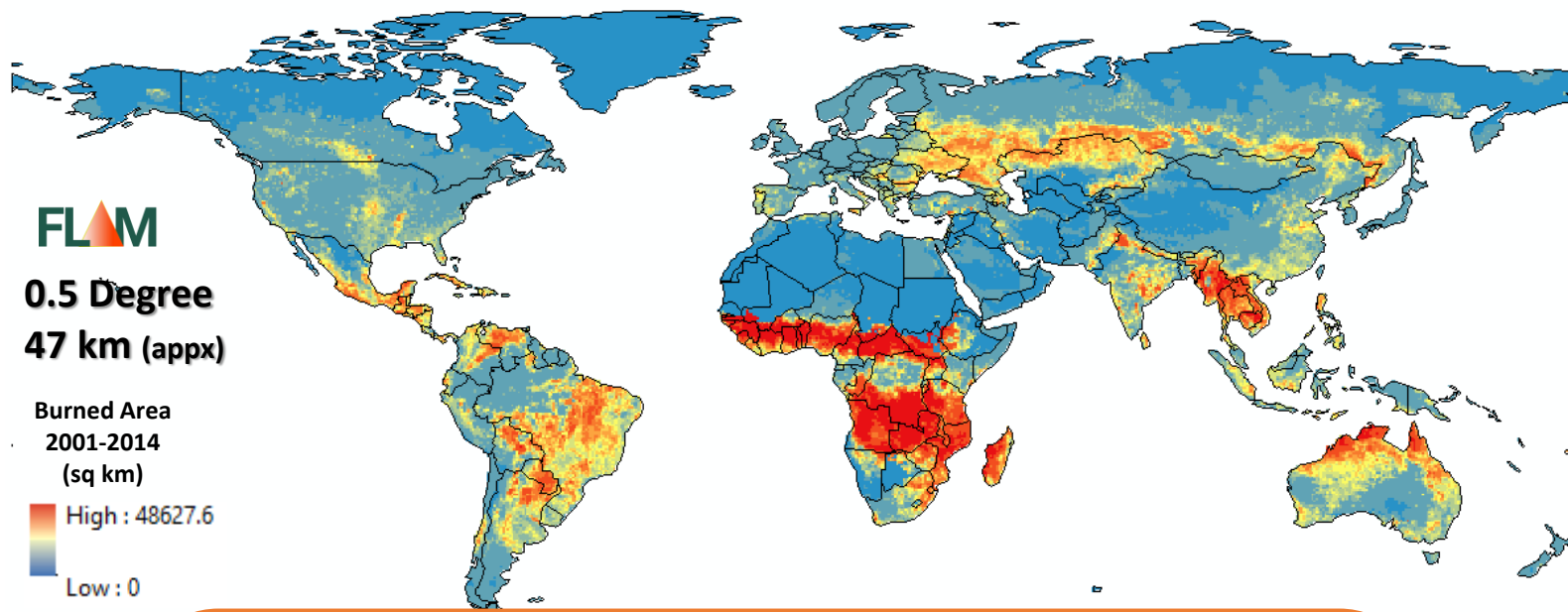


Simulated spruce bark beetle disturbances under climate change in Central Europe

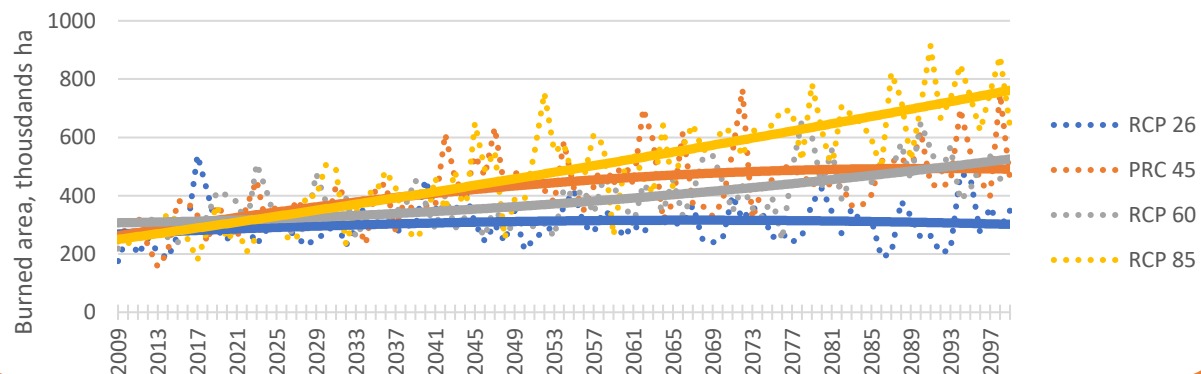


[Lexer et al. 2022, Egger et al. 2024, Lexer et al. (in prep)]

Natural disturbances under climate change – increased forest fire risk (burned area/frequency/intensity)



Area burned in European Forests up to 2100 under different climate pathways



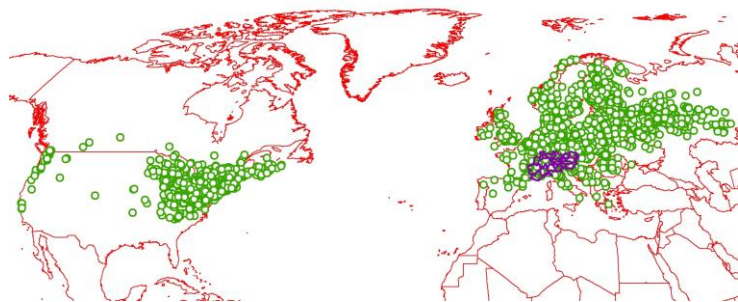
Calibration period: 2009-2018 (Data were provided by the European Forest Fire Information System – EFFIS (<http://effis.jrc.ec.europa.eu>) of the European Commission Joint Research Centre. Reference)

Projection period: 2019-2099

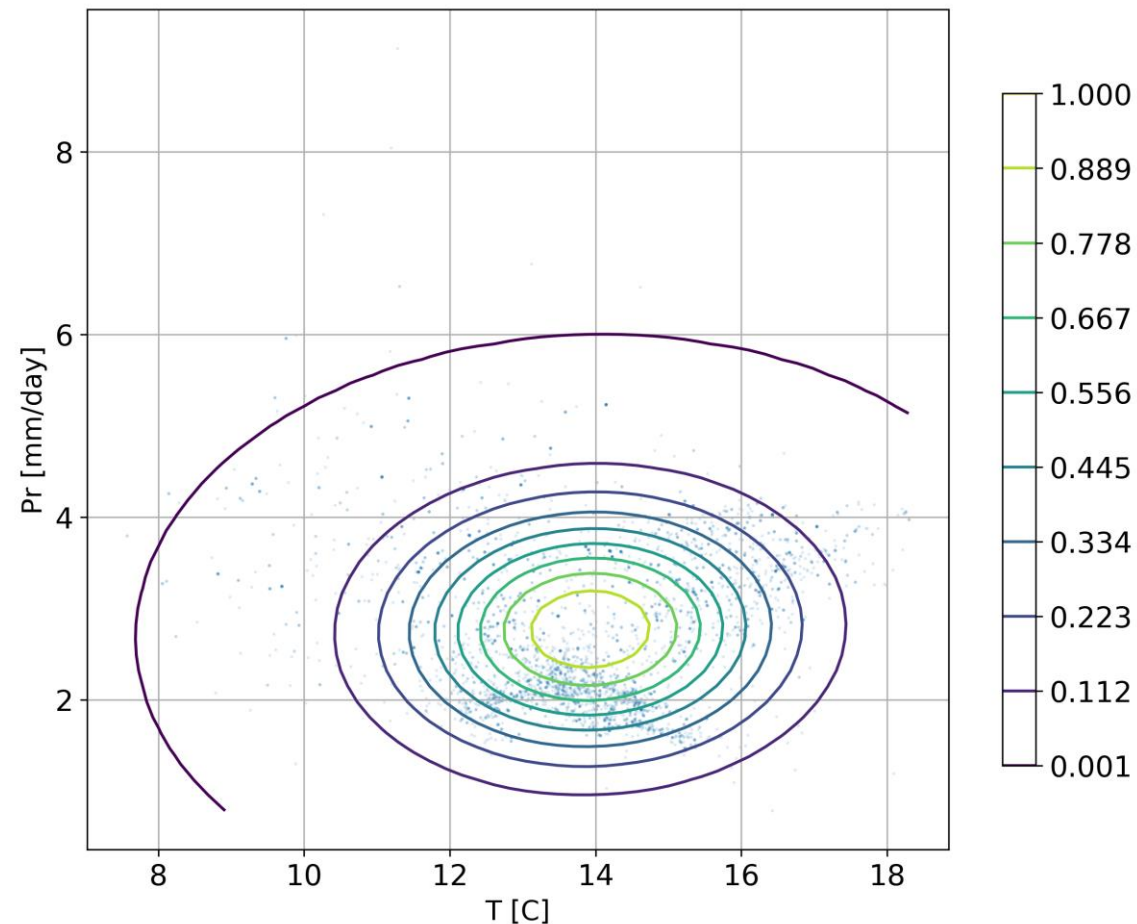
Climate data: HadGEM2-ES model (ISIMIP2b)

Forest Tree Species @ Climate Risk – Adatpation & Mitigation

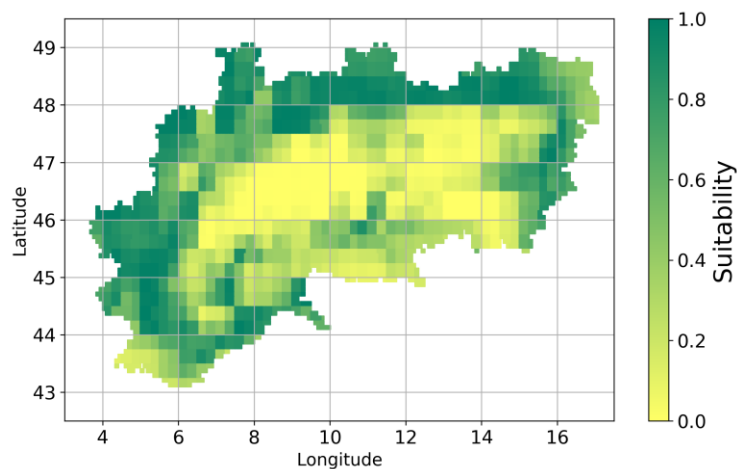
Citizen Science from iNaturalist
global occurrence



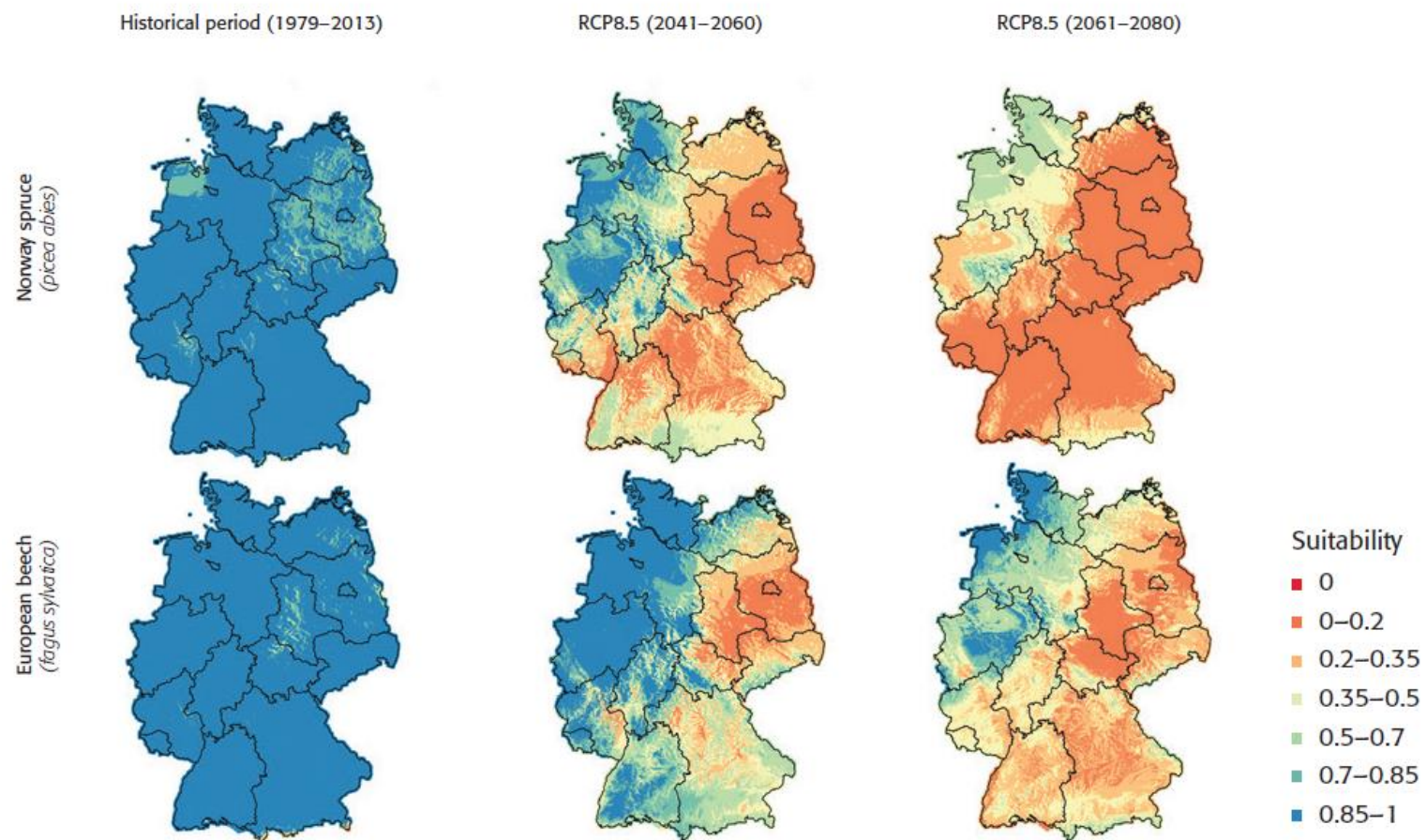
Climate ordination/modeling



Tree Species Suitability



Climate change – local suitability for tree species



Europe's future forest management in a changing climate – Comments of the Finnish forest industries

Teaming up 4 Forests webinar

Karoliina Niemi, Forest Director

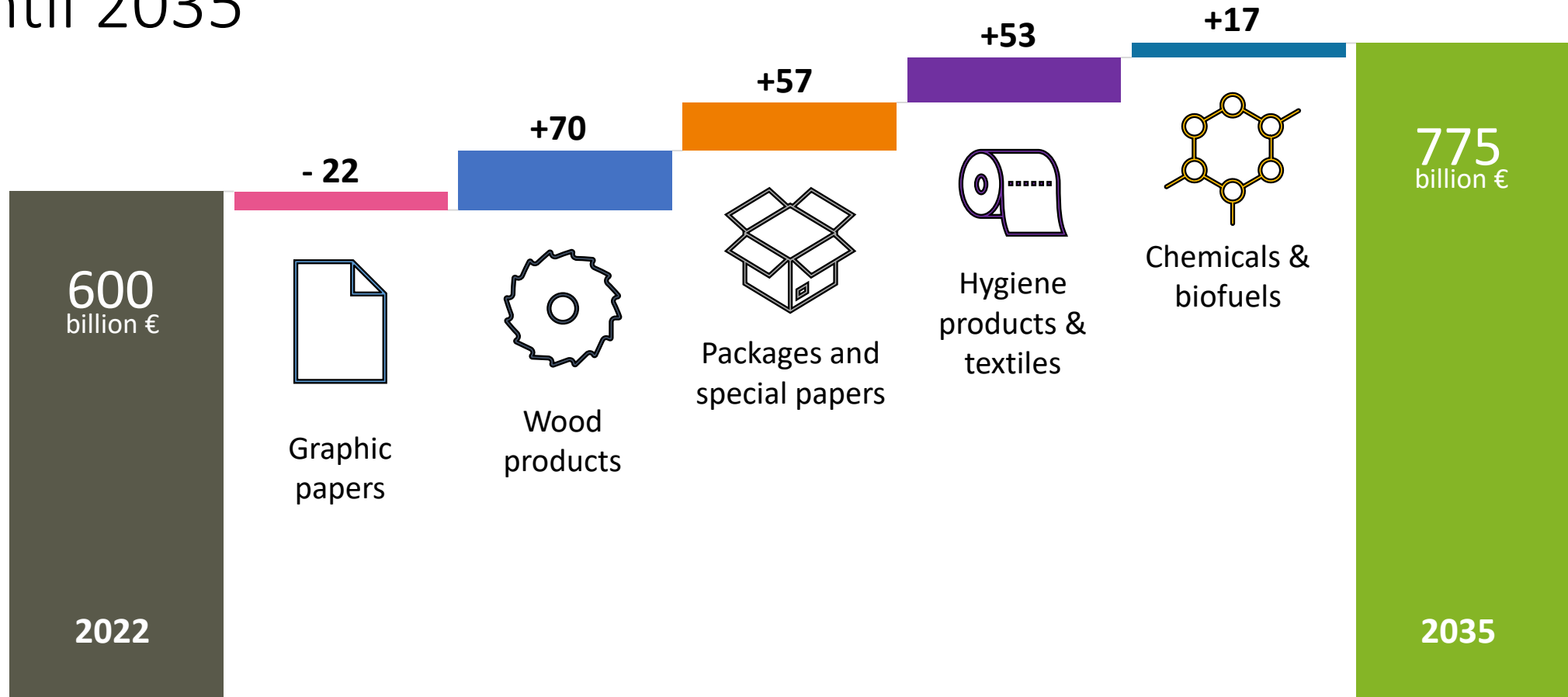
7.11.2024



Finnish Forest Industries



Green transition continues: Global market for the forest-based products is estimated to increase by 175 bn euros until 2035



Instead of returning to the past we must adapt to the future climate – active forest management and wood-based circular



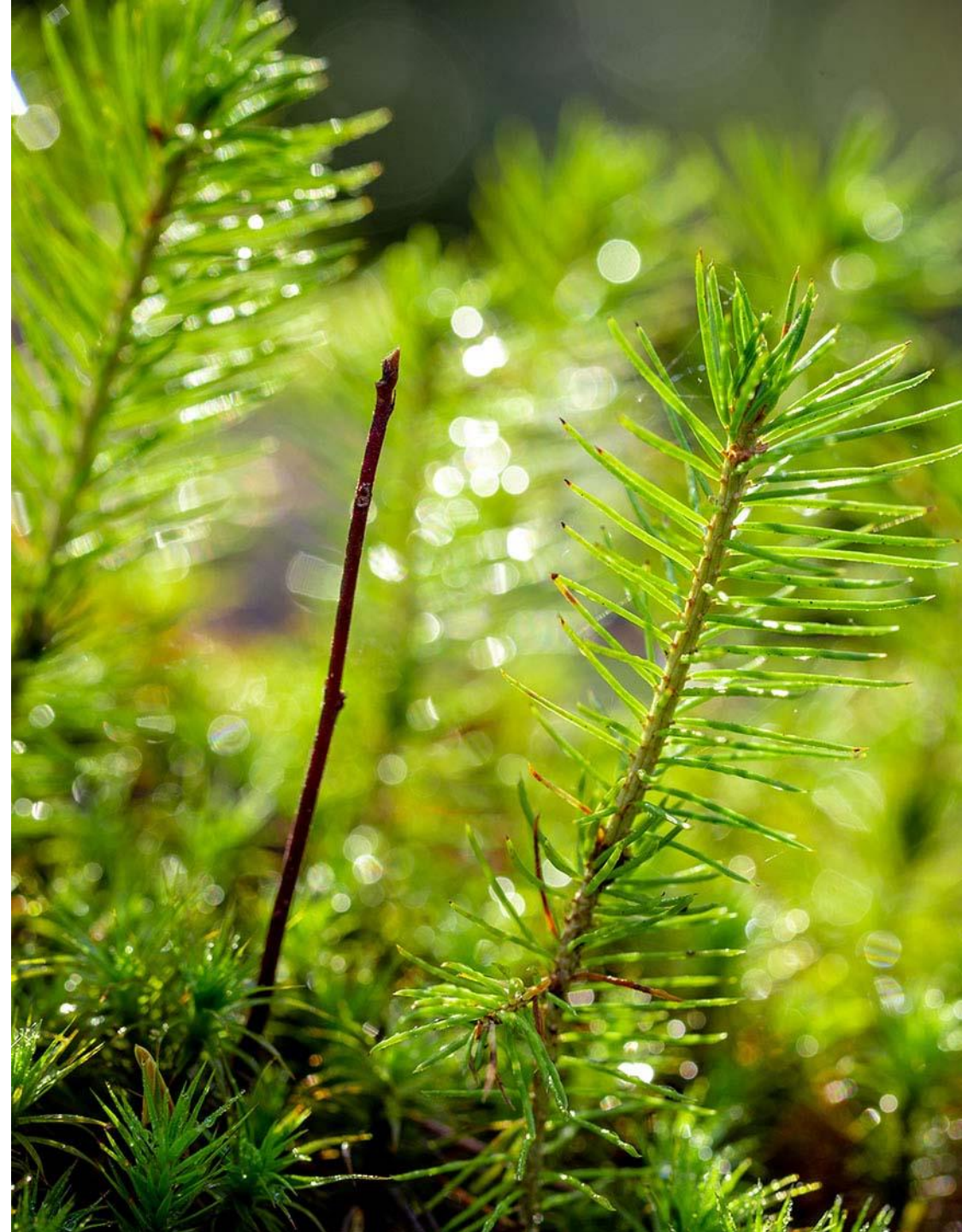
Model of the wood-based circular economy

RESILIENT AND WELL-GROWING FORESTS

- *Regeneration* with high quality seed material
 - Improved and site-suitable genotypes
- *Adaptive forest management*
 - Actively and timely
 - Tree composition and biodiversity

PRODUCTS FOR OUR EVERY-DAY LIVES AND TO TACKLE CLIMATE CHANGE

- *Resource efficient* use of wood
 - Primary raw material
 - Side streams
- *Recycling* of products



Safeguarding biodiversity as part of the adaptive forest management

- The biodiversity roadmap of the Finnish wood processing industry was published in 2023
- The goals of both wood production and biodiversity can be reconciled, when investments in the growth of forests are also stronger
- Please read <https://www.metsateollisuus.fi/en/biodiversity>

Roadmap for the wood processing industry
More biodiverse forests



Figure: Stora Enso

Contact info:

Karoliina Niemi

Email: Karoliina.niemi@forestindustries.fi

Tel.: +358-50-5679093

X: @niemi_karoliina



TEAMING UP 4 FORESTS

A science-business platform initiated by IUFRO and Mondi

TEAMING UP 4 FORESTS addresses key challenges for the **sustainable provision of wood-based products** to meet societal demands and thereby supporting the achievement of the UN Sustainable Development Goals.

Find more information on our website:

teamingup4forests.com

Expressions of interest for partnership:

info@teamingup4forests.com



Europe's future
forest management
in a changing
climate

TEAMING UP 4 FORESTS
WEBINAR

Thank you!



<https://www.teamingup4forests.com>



<https://www.linkedin.com/groups/9235219/>



info@teamingup4forests.com



Download full report,
summary and
factsheet here